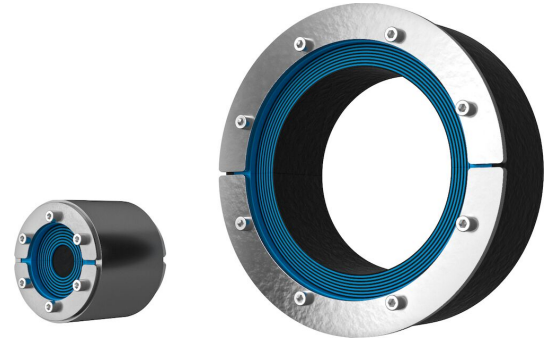




# Sello Roxtec RS con SL RS

Sello de entrada para un solo cable o tubería.

El Roxtec RS con SL RS es un sello con collarín de metal para cables o tuberías individuales. El sello de entrada tiene dos mitades con capas retirables, con lo que se puede adaptar a cables y tuberías de diferentes tamaños. El collarín se suelda a la estructura.



- Rápido y sencillo de instalar
- Ofrece una sujeción excelente de los cables

## Características del producto



Calificación contra incendios



Estanco al agua



Estanco a gases

## Estructura de instalación



Metal

## Tipo de montaje



Soldadura

## Calificaciones y certificados

### Fuego

- CLASE A de acuerdo al estándar FTP IMO 2010
- Clasificación E/EI según EN 45545 E30
- CLASE H según el Código IMO 2010 FTP + curva de carga de fuego HC
- Ráfagas de fuego según ISO 22899-1 y OTI 95634

### Estanquidad

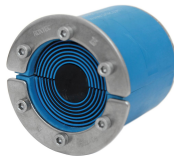
- Gas: 2,67 bar (catastrófico)
- Agua: 4 bar (catastrófico)

## Datos de los componentes de sellado

### Componentes de sellado



Collarín SL RS



Sello RS



Lubricante Roxtec

Para obtener información detallada, visite [roxtec.com](https://www.roxtec.com).

The product information provided by Roxtec does not release the purchaser of the Roxtec system, or part thereof, from the obligation to independently determine the suitability of the products for the intended process, installation and/or use. Roxtec gives no guarantee for the Roxtec system or any part thereof and assumes no liability for any loss or damage whatsoever, whether direct, indirect, consequential, loss of profit or otherwise, occurred or caused by the Roxtec systems or installations containing components not manufactured by an authorized manufacturer and/or occurred or caused by the use of the Roxtec system in a manner or for an application other than for which the Roxtec system was designed or intended. Roxtec expressly excludes any implied warranties of merchantability and fitness for a particular purpose and all other express or implied representations and warranties provided by statute or common law. User determines suitability of the Roxtec system for intended use and assumes all risk and liability in connection therewith. In no event shall Roxtec be liable for indirect, consequential, punitive, special, exemplary or incidental damages or losses. The Roxtec products are offered and sold in accordance with the conditions of the Roxtec General Terms of Sales. The latest version of the Roxtec General Terms of Sales can be downloaded from <https://www.roxtec.com/en/about-us/about-roxtec/general-terms-of-sales/> We reserve the right to make changes to the product and technical information without further notice. Any errors in print or entry are no claims for indemnity. The content of this publication is the property of Roxtec International AB and is protected by copyright. This document was generated on: 2024-04-19